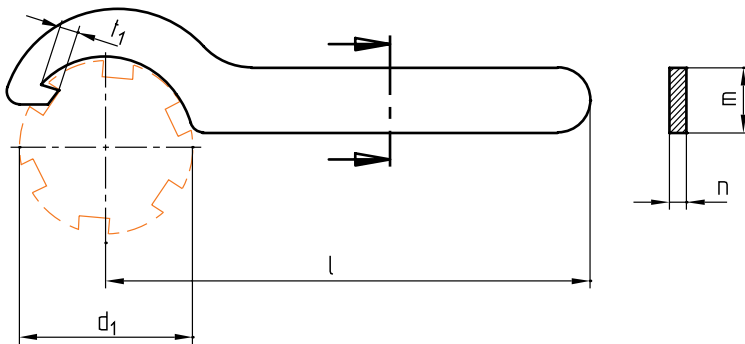


A5120/...

Mat.: Chrom-Vanadium Stahl
 Chrome Vanadium steel
 Acier au chrome-vanadium

DIN 1810-A



*) Baugleich mit Z 1685/...
 Similar to Z 1685/...
 Môme type que Z 1685/...

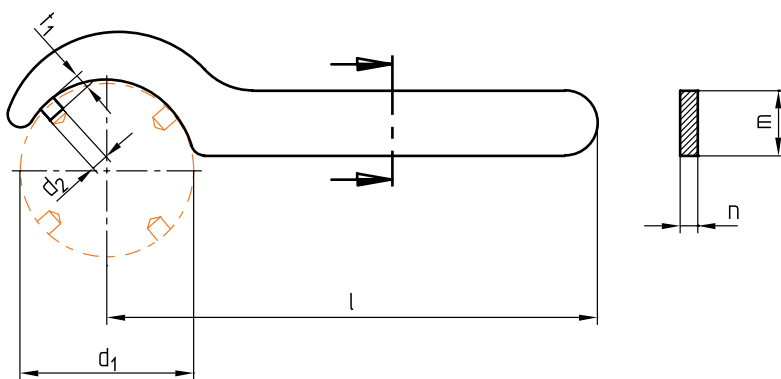
t ₁	n	m	l	d ₁	Nr./No.
1,2	3	10	100	12-14	A5120/12-14
1,5				16-20	16-20
2	4	12	120	25-28	25-28
				30-32	30-32
2,5	5	15	150	34-36	34-36
				40-42	40-42

t ₁	n	m	l	d ₁	Nr./No.
3	6	18	180	45- 50	A5120/45- 50
				52- 55	52- 55*
3,5	7	21	210	58- 62	58- 62
				68- 75	68- 75*
4	8	24	240	80- 90	80- 90*
				95-100	95-100

A5121/...

Mat.: Chrom-Vanadium Stahl
 Chrome Vanadium steel
 Acier au chrome-vanadium

DIN 1810-B



d ₂	t ₁	n	m	l	d ₁	Nr./No.
2	2,5	3	10	100	12-14	A5121/12-14
					16-18	16-18
					20-22	20-22
3	3	4	12	120	25-28	25-28
					30-32	30-32
4	3,5	5	15	150	34-36	34-36
					40-42	40-42

d ₂	t ₁	n	m	l	d ₁	Nr./No.
5	4	6	18	180	45- 50	A5121/45- 50
					52- 55	52- 55
	5	7	21	210	58- 62	58- 62
					68- 75	68- 75
6	6	8	24	240	80- 90	80- 90
					95-100	95-100

This is trial version
www.adultpdf.com